

Home Design Phase 1 – Research & Ideate

Today let's imagine you are a college graduate moving out on your own and just need a nice space for yourself. Design a cottage with the essential rooms you will need to live a comfortable life. Get creative with the space when thinking about where you would like each room to go and how the flow of your home will be.

Part 1: Research

Requirements:

- One Bedroom
- One Bathroom
- Kitchen / Dining Room
- Living Room
- Account for Storage in each area of the home

Where to Begin:

- Begin by thinking about what style home you would like to design. We will be working through how to design a proper home with proper flow, along with how to implement a style into a full house. Style is not just about colors and materials, it includes concepts like; open floor plans vs. closed floor plans, overall flow of the house, window sizes, and so on. Take some time to look at homes that have been done in your style and allow yourself to be inspired by what you see.
- Create an Inspiration board in word or illustrator in order to help organize your thoughts and ideas

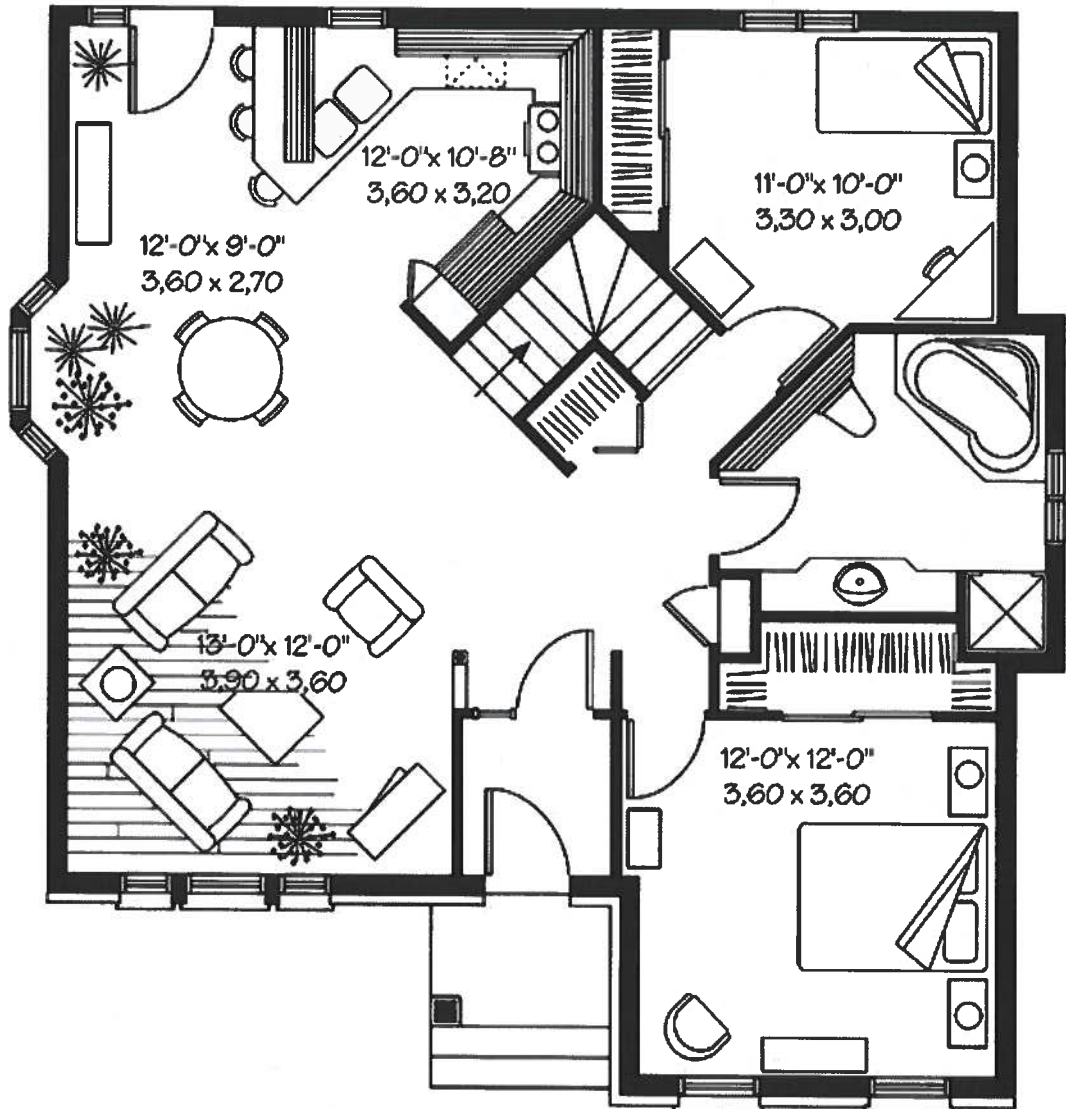
Things to Remember:

- Your home can only be 1 Level
- You have the choice of 35'x35', 25'x45', or 30'x40' area to work but you ARE NOT confined to a square or rectangular shape
- Get creative with positive vs. negative space (having porches and openings)

Part 2: Ideate

- Begin by drawing out a 35'x35' square on green paper
- Draw your initial ideas on paper utilizing all of your research
- Use trace to continue building upon your ideas

Example 2:



Get Away from the Box: This is a great example of space being used to its maximum potential. This house is very small but it wouldn't necessarily feel that way if you were inside.

Intro to Architecture
Final Project
Mrs. Hreczny

Home Design Phase 2,3 4 & 5 Develop, Prototype, Refine & Build

Phase 2: Develop

Design process and AutoCad Drawing

- 1) Choose one design from the Ideate Phase and begin developing the floorplan.
- 2) Begin sketching your final design out on green or trace paper.
 - (Be sure to use ¼" scale to stay consistent)
- 3) Loosely add some pieces of furniture from the templates in the back in order to give yourself a better understating of how big or small your spaces are.
- 4) Be sure to include details like
 - a. Bathroom and Kitchen Fixtures (ie: Toilet, sinks etc.)
 - b. Kitchen counters (They come out 2'-0" and can be as long as you need them to be)
 - c. Door and Window Locations
 - d. Basic room measurements in order to help make your Cad process run smoother.
- 5) Once you have a plan for all of the above details, begin inputting your floorplan into the template provided on AutoCad

Phase 3: Prototype

- 1) Notify Mrs. Hreczny once your AutoCad is finalized.
- 2) Review the AutoCad File and she will help you transfer it into Sketchup
- 3) Once in Sketchup, add all furniture, colors and details.

Phase 4: Refine

- 1) Pair up with a friend and review your project. Explain details that are important to your design. Offer constructive criticism to one another. Make any necessary changes.

Phase 5: Develop

- 1) Once your drawings and 3d model are completed you will begin your final board.
- 2) In the area where your concept information would typically go you will be putting information about your chosen style and how you approached it.
- 3) Add your AutoCad drawings (already in your file from Mrs. Hreczny)
 - a. Lineweights
 - b. Room Labels
 - c. Scale
- 4) Include Renders from Sketchup
- 5) Include swatches of your materials and finishes to explain your color scheme and I.D.